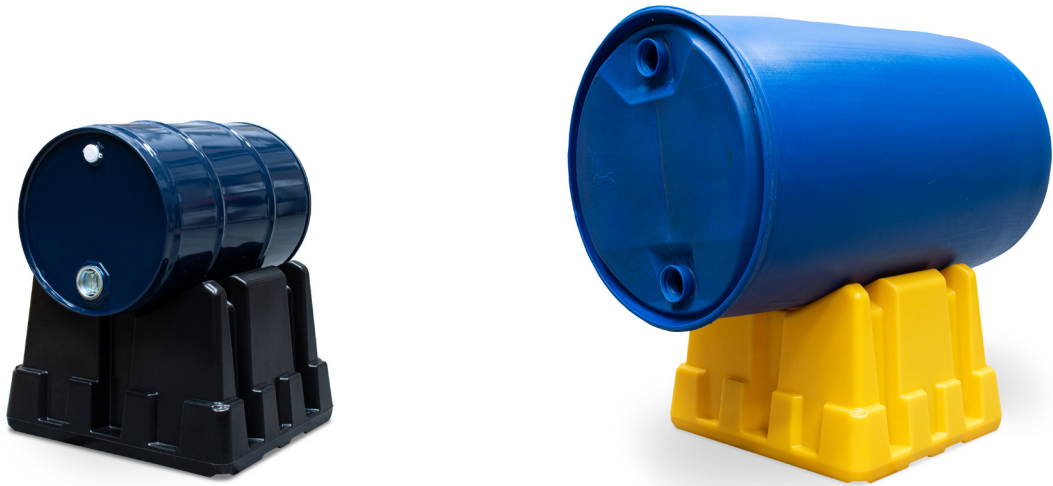


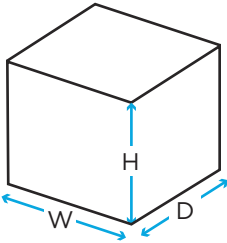
Drum Stand

Technical Data



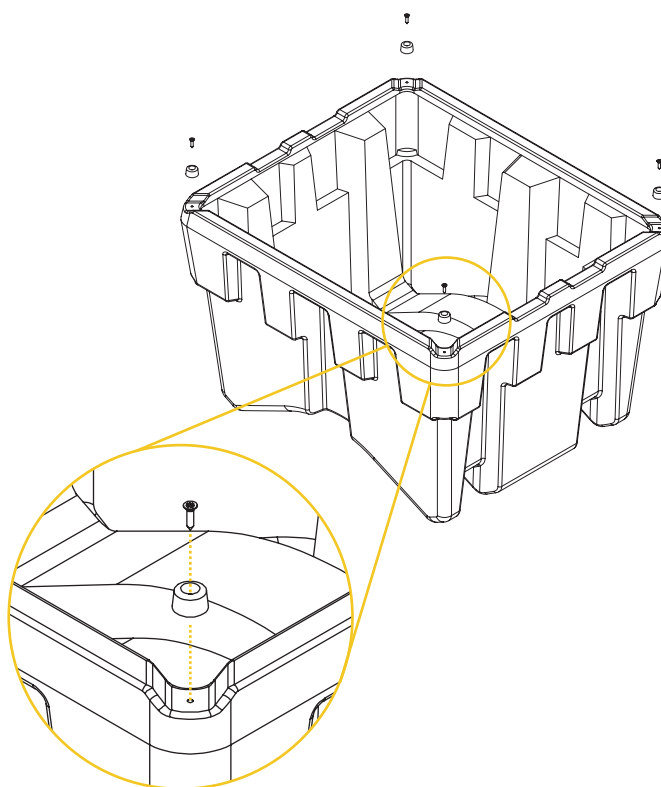
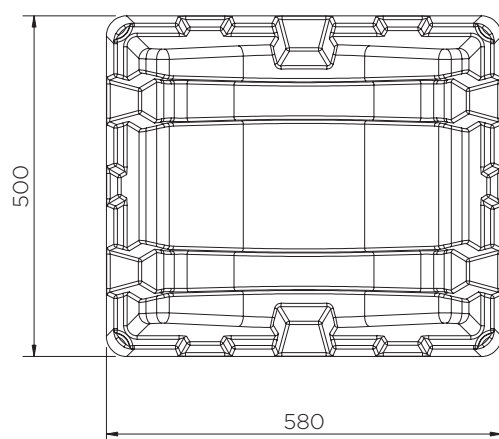
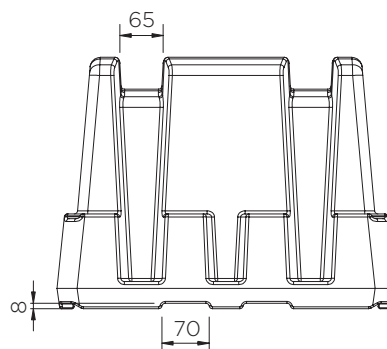
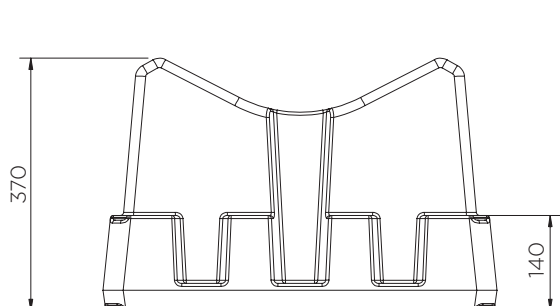
To select a colour, replace 'XXX' with one of the following:
101: ● 102: ●

	Colour	H x W x D (mm)	Weight (kg)	Max. load (kg)
SJ-200-XXX	● ●	370 x 580 x 500	5.8	500



Drum Stand

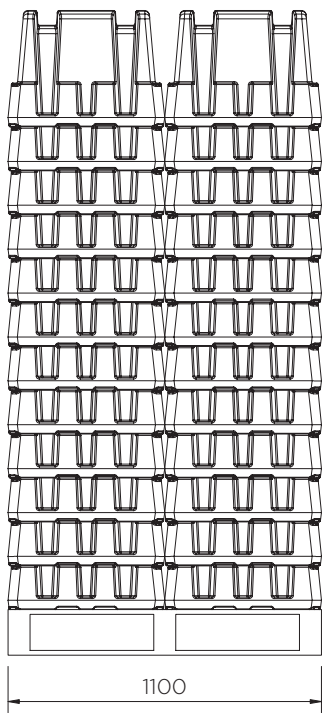
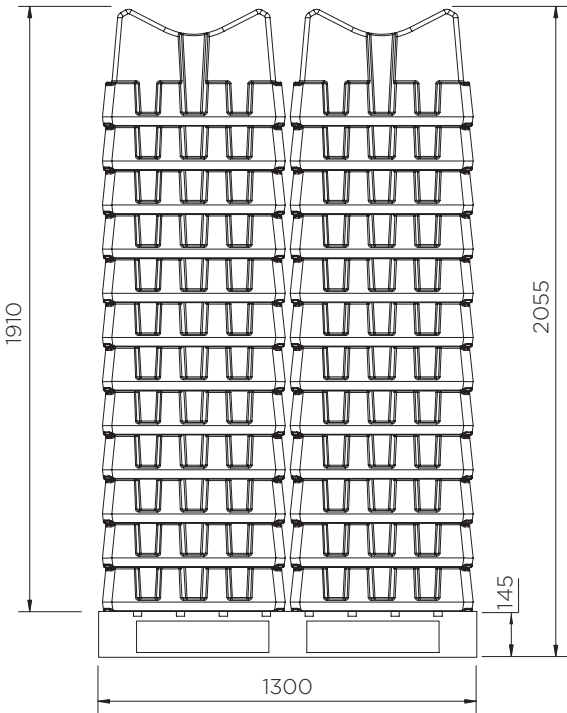
Technical Data



Optional extra: Rubber feet (KIT52)

Drum Stand

Technical Data



SJ-200-XXX

Pieces per pallet	48
20' container	480
40' high cube container	1008
13.6 m trailer	1248

The information is to our best knowledge true and accurate but all recommendations or suggestions are made without guarantee.