

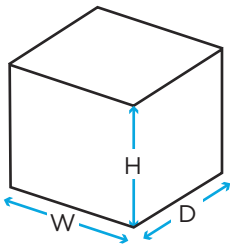
Equipment shelter

Technical Data



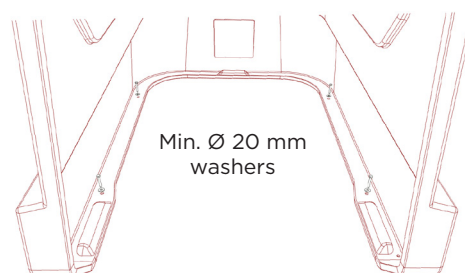
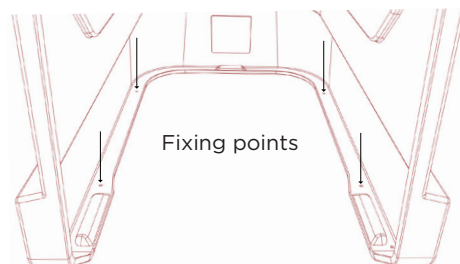
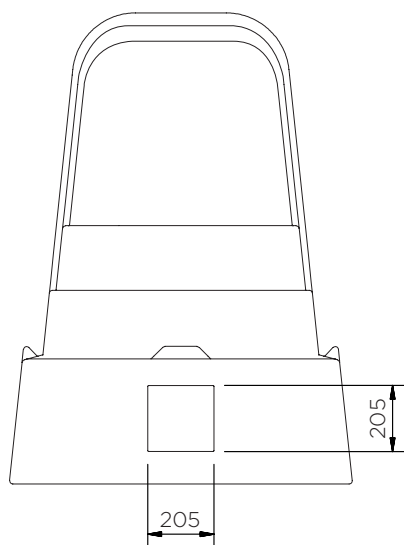
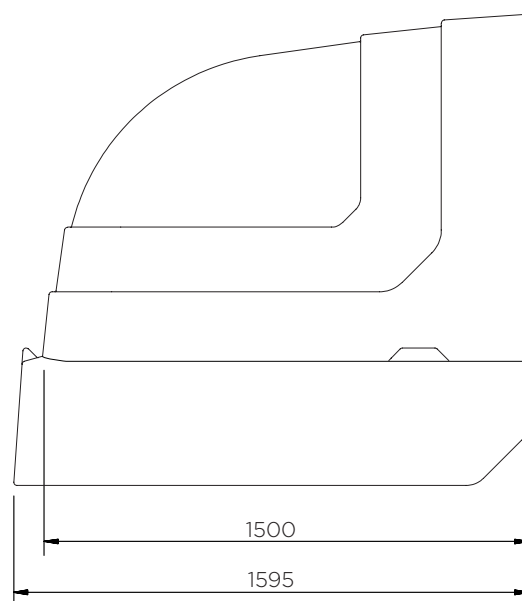
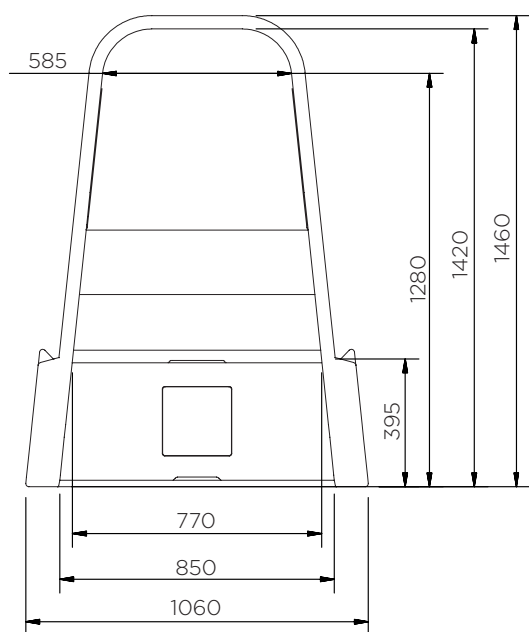
	Colour options	H x W x D (mm)	Weight (kg)	Soft door*
JES146-CORE	●	1460 x 1060 x 1595	32.5	JES146-SC1

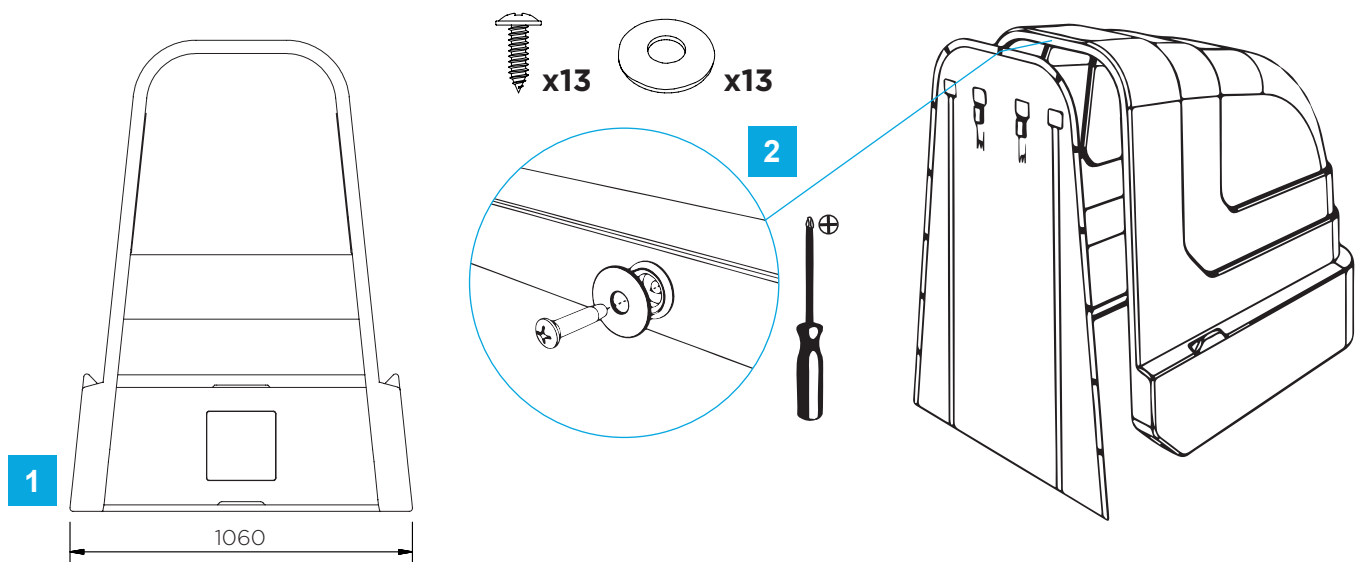
* Optional accessories



Equipment shelter

Technical Data

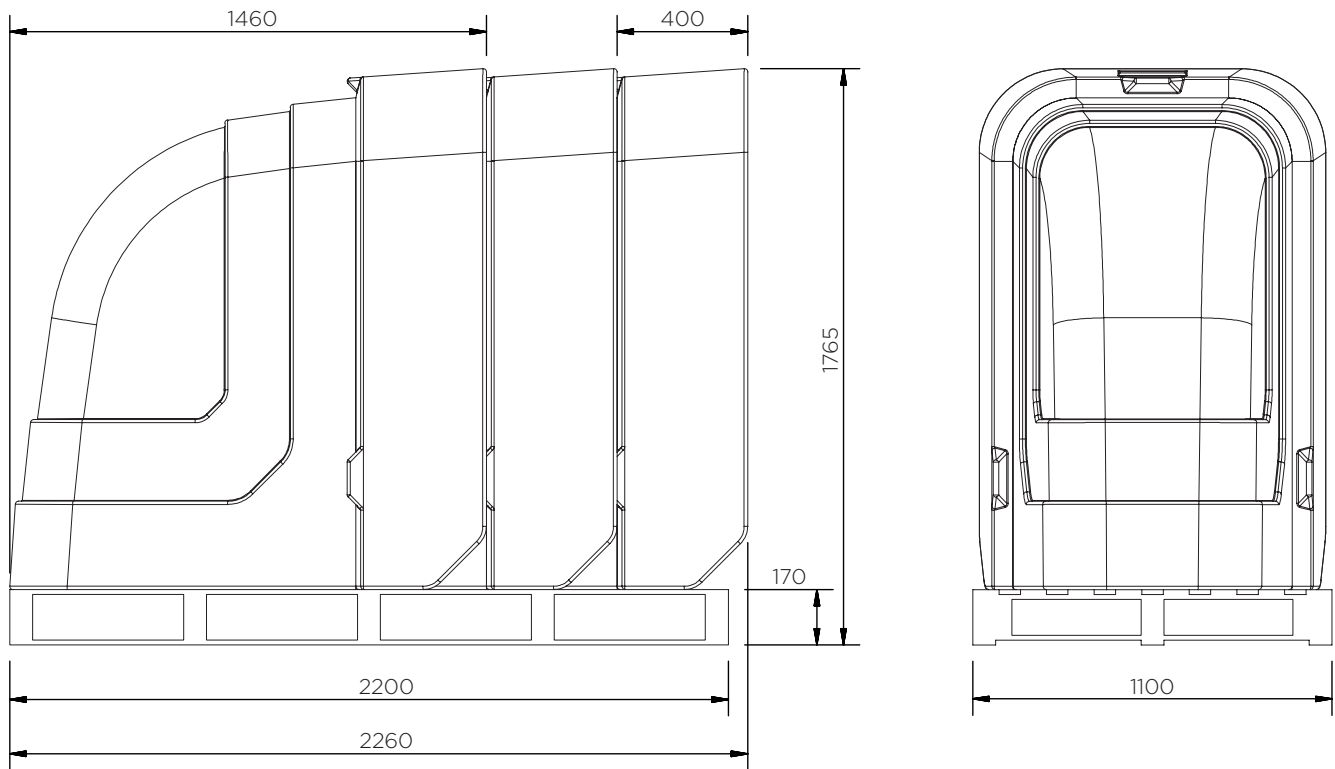


Assembly instructions - Soft door (JES146-SC1)

1. Before attaching the soft door, make sure the opening distance is set at 1060 mm. Fix the Equipment Shelter to the ground if necessary (see previous page).
2. Using fixings supplied, attach the first screw and washer into central locator as indicated. Attach remaining fixings, working your way from the top down.

Equipment shelter

Technical Data



JES146-CORE	
Pieces per pallet	3
20' container	15
40' high cube container	36
13.6 m trailer	39

The information is to our best knowledge true and accurate but all recommendations or suggestions are made without guarantee.

